



DT-A390

MODEL DT-A390

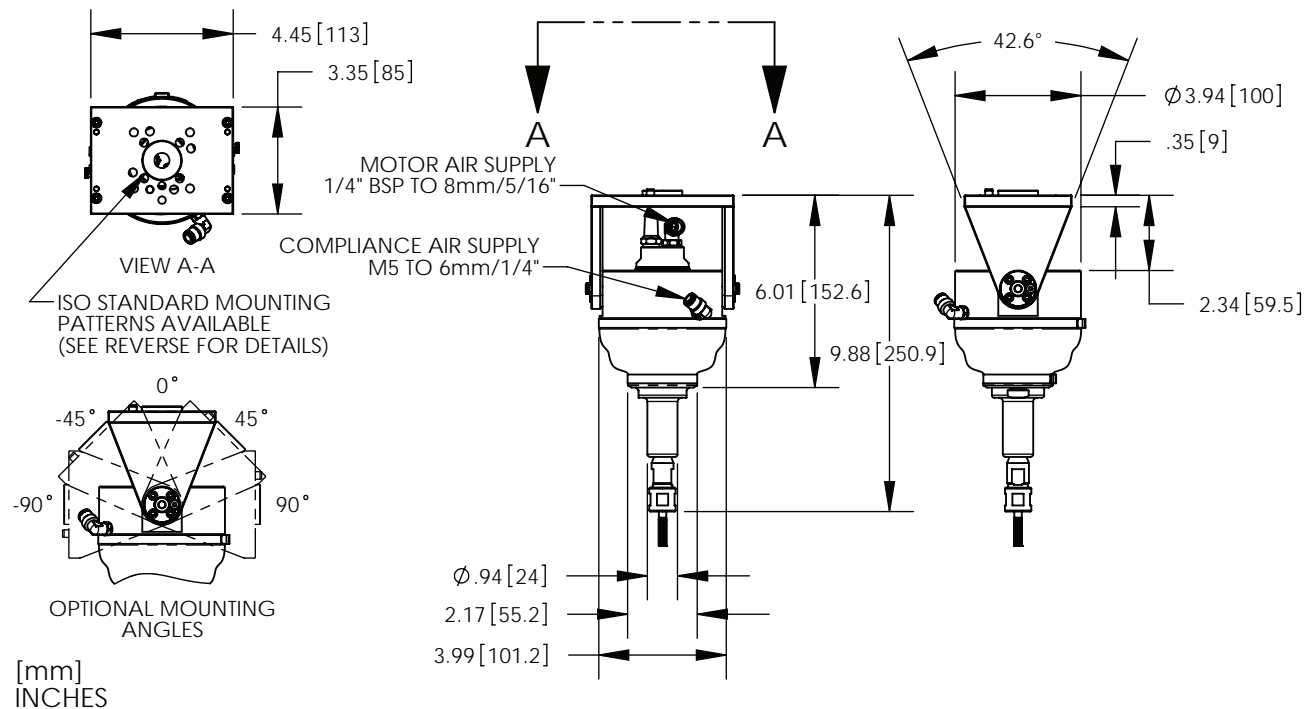
Variable-Speed, Compliant Deburring Tool with Air Motor

Radial Bur Force 10 to 90 psi (0.68 to 6.2 bar)	3 to 17 lbf 13 to 75 N	Collet Size	1/4 in or 6 mm
Radial Compliance	±0.31 in ±8 mm	Weight With included mounting saddle	5.3 lbs 2.4 kg

Air Motor - Vane Type

Maximum Power Output @ 9,400 RPM	0.52 hp 390 watts	Torque @ Maximum Power Output	0.3 ft-lb 0.4 N-m
Motor Speed Variable	9,400 to 20,000 RPM	Air Consumption @ Maximum Power Output	17.6 CFM 498 L/min
Air Supply Pressure†	40 - 100 psi 2.8 - 6.9 bar	Noise Level	≈77 dBa

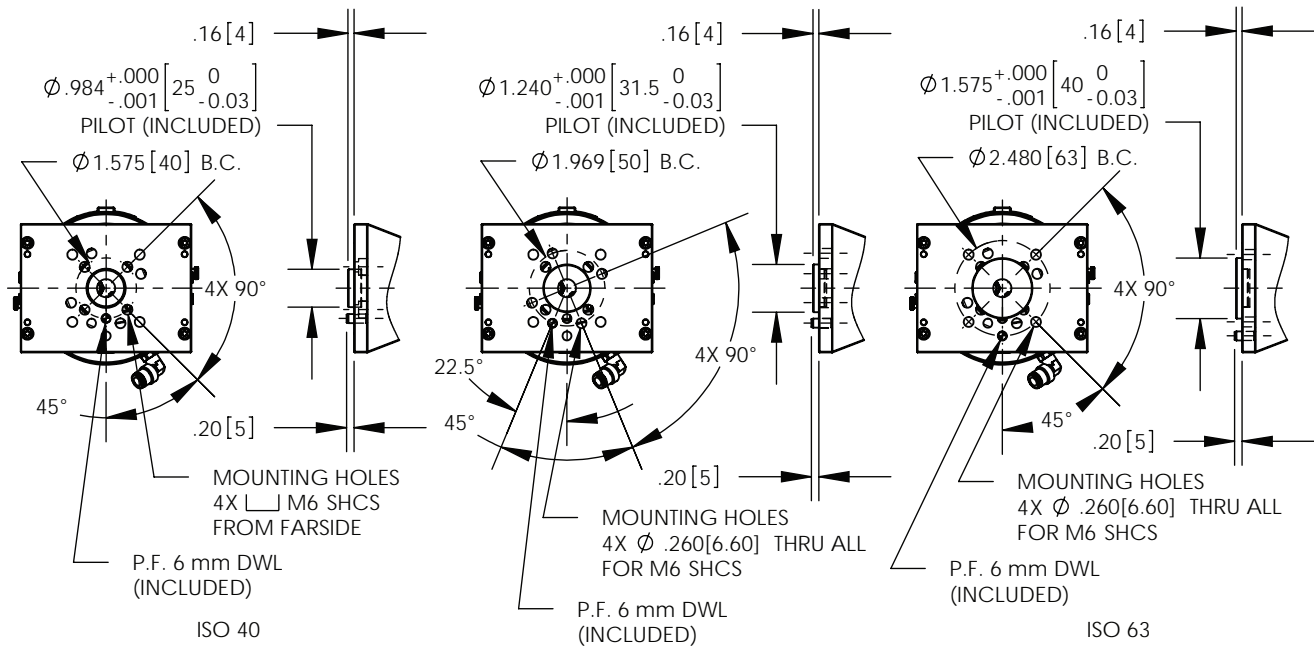
†Air motor requires lubricated air.



For More Information:

- Call us at 937.667.5705
- E-mail us at info@rad-ra.com
- Visit www.rad-ra.com for the most up-to-date product information, 2D and 3D CAD files, and more!

ISO Mounting Patterns



[mm]
INCHES

PILOT INCLUDED - PLEASE SPECIFY
WHICH ISO MOUNTING PATTERN
YOU PREFER WHEN ORDERING

RAD

Robotic & Automation Tooling

6555 S. State Route 202

Tipp City, OH 45371

Ph: 937.667.5705

Fx: 937.667.7602

e-mail: info@rad-ra.com

www.rad-ra.com