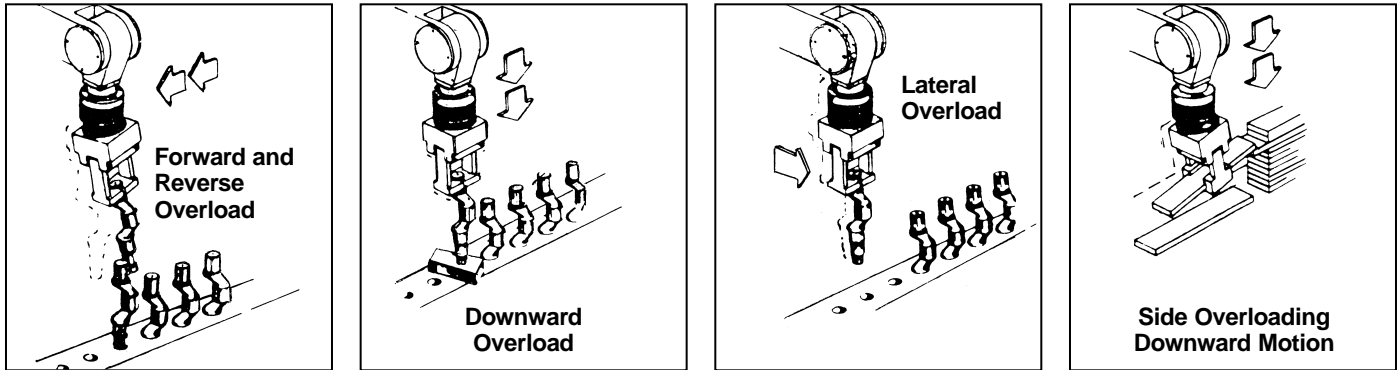


- Uni-Coupler safety joints are completely field repairable for minimum downtime.
- Repeatability. Returns to within 0.002" of the original position after deflection (measured at mounting flange).
- Wide Range. Five model sizes offer a moment resistance range from 4.2 to 6653.3 in-lbs.
- Outriggers upgrade the capacity of the Uni-Coupler safety joint without advancing to the next larger size. Some safety joint models include Outriggers (reference specifications).



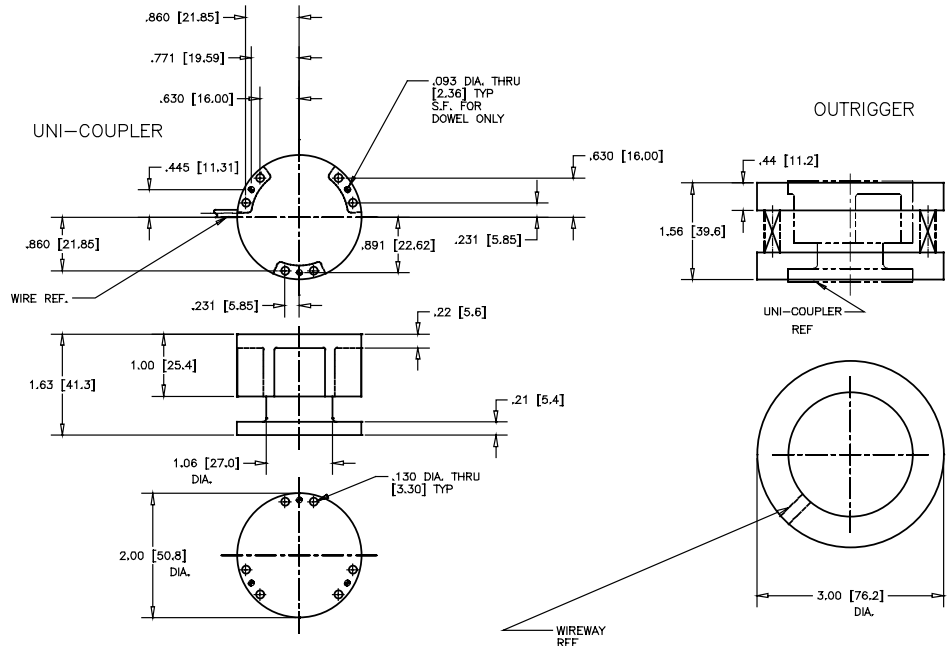
MODEL 4418

Specifications

Weight of Uni-Coupler 6 oz.
 Weight with Outrigger 9.5 oz.
 Maximum Deflection 12°

Moment Resistance Setting (in-lb)

Model	In-Lb
A	4.2
B	5.8
C	9.0
D	10.7
E	11.6
F	18.8
G	28.9
H	45.8
I	60.9
J	65.8



Models E through J include Outrigger.

NOTE: Model 4418 is not available with Quick Disconnect Option.