

MODEL P-7200

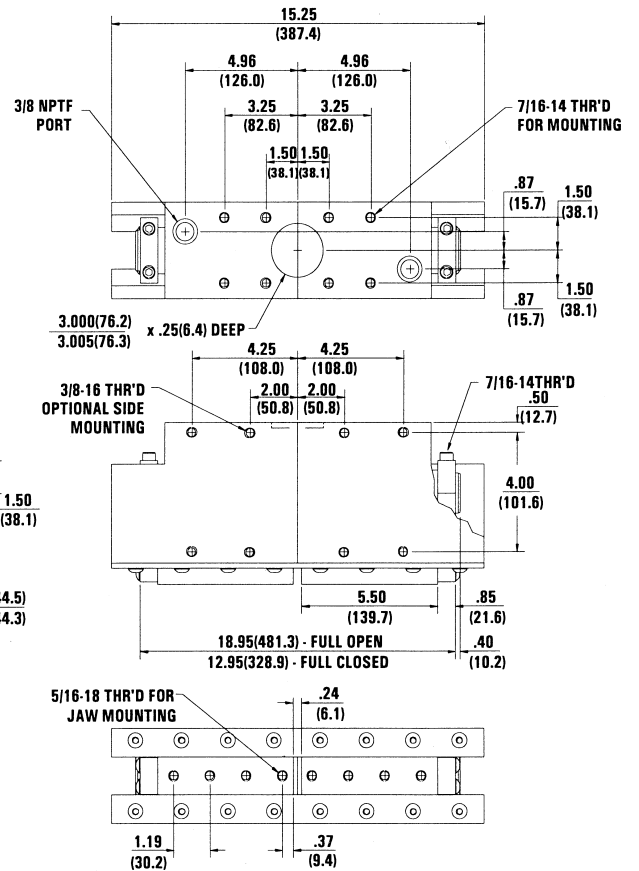
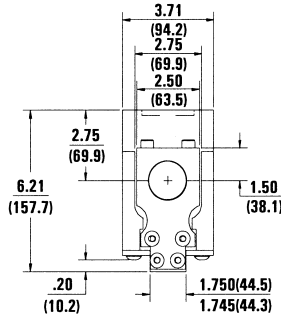
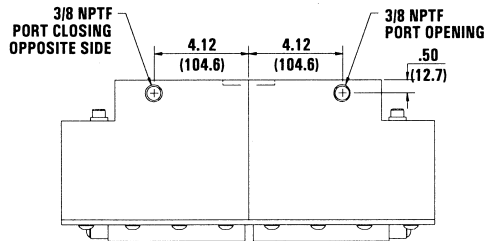
Long Stroke

Specifications

Stroke 6.00 in. (152.4mm)
 Gripping Force—Closing @ 100 psi (6.8 bar)
 503.5 lbs. (228.4 kgf)
 Gripping Force—Opening @ 100 psi (6.8 bar)
 636.2 lbs. (288.7 kgf)
 Weight 39.88 lbs. (18.09 kg)
 Operating Displacement . . . 42.411 in³ (695.0 cm³)
 Maximum Operating Pressure . . 250 psi (17.0 bar)

*ALL MTG. HOLES 1-1/2 DIA.
 MIN. THREAD DEPTH

OPTIONAL SIDE PORTING

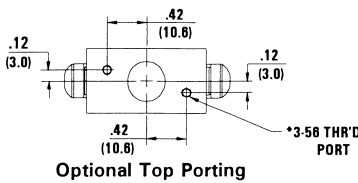


MODEL P-7700

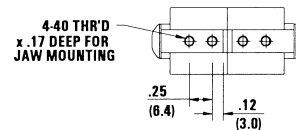
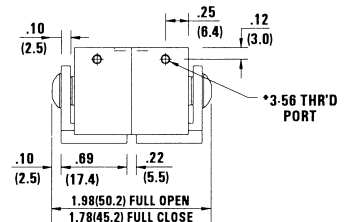
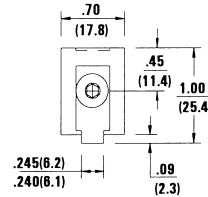
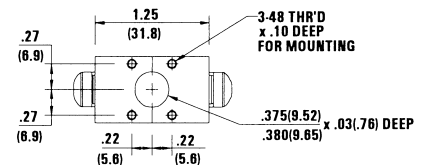
Standard Stroke—Miniature Grippers

Specifications

Stroke 0.20 in. (5.08mm)
 Gripping Force—Closing @ 100 psi (6.8 bar)
 6.9 lbs. (3.1 kgf)
 Gripping Force—Opening @ 100 psi (6.8 bar)
 13.5 lbs. (6.1 kgf)
 Weight 1.63 ozs. (45.36 g)
 Operating Displacement 0.030 in³ (.491 cm³)
 Maximum Operating Pressure . . . 150 psi (10.2 bar)
 —Air Only



Optional Top Porting



*Barbed Fitting for 1/16 ID Tube Supplied by Robotic Accessories