

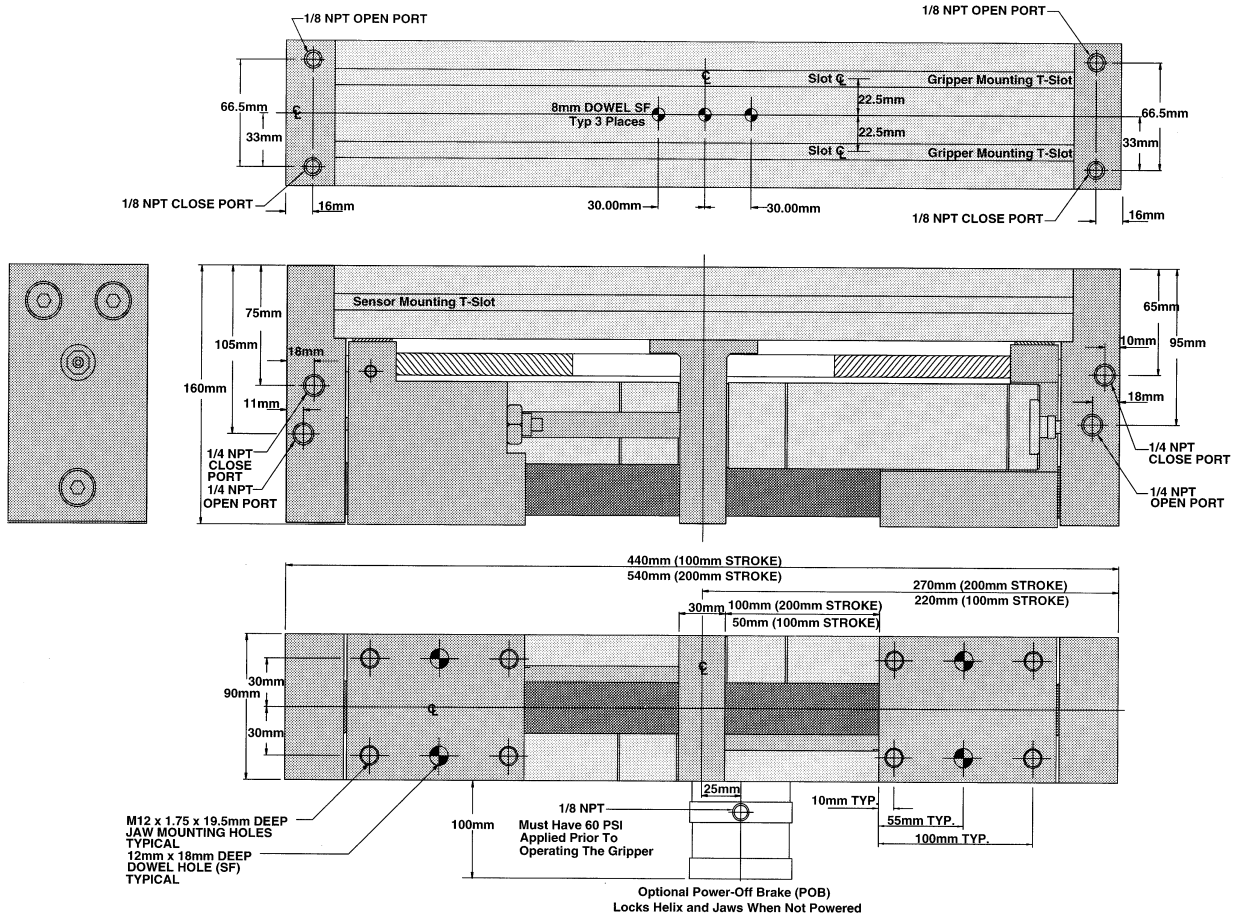
MODEL PX-1250-100/200

Specifications

Gripping Force—Open & Close Each Jaw,
 @ 100 psi (690kPa) 280 lbs. (1250N)
 With PX-INT-2:1 Option 560 lbs. (2500N)
 Maximum Operating Pressure 250 psi (1724Kpa)

Stroke: -100 3.94" (100mm)
 -200 7.87" (200mm)
 Weight -100 27.8 lbs. (12.7kg)
 -200 30.0 lbs. (13.6kg)

Note: Eight T-Nuts (8mm) are supplied to mount gripper.



Ordering Information

Model	Brake	Force, Each Jaw	Stroke
PX-1250-100	No	280 lbs. (1250N)	3.94" (100mm)
PX-1250-100-POB	Yes	280 lbs. (1250N)	3.94" (100mm)
PX-1250-200	No	280 lbs. (1250N)	7.87" (200mm)
PX-1250-200-POB	Yes	280 lbs. (1250N)	7.87" (200mm)

Gripper Accessory Kits (Field Installable)

Model	Description	Applicable Models
PX-KIT-1250-6.5MM	Holder Only— To mount 6.5mm Proximity Switch	All
PX-KIT-1250-12MM	Holder Only— To mount 12mm Proximity Switch	All
PX-KIT-1250-18MM	Holder Only— To mount 18mm Proximity Switch	All
PX-INT-2:1-100	Intensifier—560 lbs. (2500N)	-100 & -100-POB
PX-INT-2:1-200	Intensifier—560 lbs. (2500N)	-200 & -200-POB