

MODEL TC-11

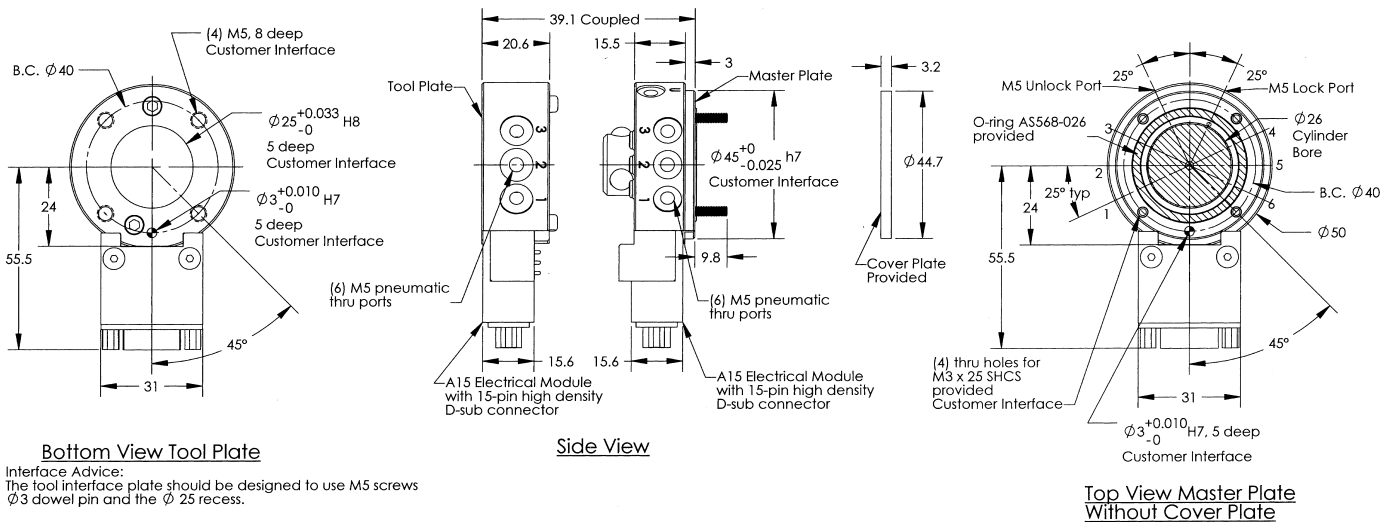
Payload Capacity—kg/lbs. 16/35
 Static Moment X & Y Resistance†—Nm/lb-in 25/220
 Static Moment Z Resistance†—Nm/lb-in 34/300
 Positional Repeatability X, Y & Z—mm/in 0.015/0.0006
 Weight when Coupled—kg/lb 0.33/0.7
 Locking Force @ 80 psi (5.5 bar)—N/lb 1068/240

Diameter when Coupled—mm/in 50/1.9
 Height when Coupled—mm/in 39.1/1.5
 Pneumatic Port Type—Pass Through (6) M5 or #10-32
 Pneumatic Port—“Lock” & “Unlock” M5
 Max. Allowable Distance Between
 Plates before Locking—mm/in 3.0/0.12

†Can handle a dynamic moment 3 times higher than the static moment capacity. Moment tests show failure point at 12 times static moment specifications.

Options

Option	# Pins	Electrical Rating	Description	Comments
A15	15	3A/50V	High-density D-sub connector	Gold-plated contact pins
E10	10	3A/150V	Solder connection, miniature size	Gold-plated contact pins
E20	20	3A/150V	Solder connection, miniature size	Gold-plated contact pins
SIP	N/A	N/A	Lock/unlock sensing	See page 19



Warning:
 Do not apply lock air pressure without master interface plate properly attached; otherwise, damage may occur to cover plate and o-ring.

ALL DIMENSIONS ARE IN MM

- Notes:**
- Optional electrical module shown; consult catalog for other options.
 - Mounting hardware is provided; cover plate, o-ring and master plate screws.
 - Cover plate is not necessary if robot interface plate provides sealing. The recommended interface plate bore depth without a cover plate is 2.5mm, with a cover plate is 5.6mm.
 - Orientation marks are provided to assist in robot teaching.
 - Misalignments allowed when coupling; consult specifications.
 - DXF, DWG and IGES images available upon request.