

MODEL TC-40

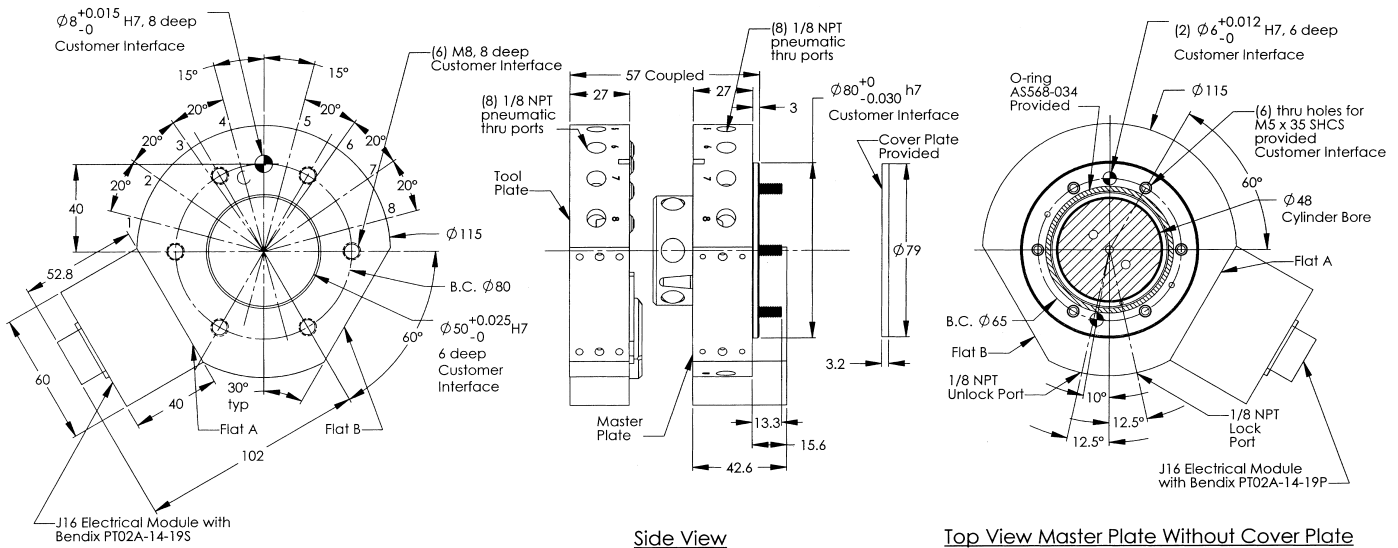
Payload Capacity—kg/lbs 50/110
 Static Moment X & Y Resistance†—Nm/lb-in 157/1390
 Static Moment Z Resistance†—Nm/lb-in 216/1910
 Positional Repeatability X, Y & Z—mm/in 0.015/0.0006
 Weight when Coupled—kg/lb 1.8/3.9
 Locking Force @ 80 psi (5.5 bar)—N/lb 4540/1020

Diameter when Coupled—mm/in 115/4.5
 Height when Coupled—mm/in 57/2.2
 Pneumatic Port Type—Pass Through (8) 1/8 NPT
 Pneumatic Port—“Lock” & “Unlock” 1/8 NPT
 Max. Allowable Distance Between
 Plates before Locking—mm/in 5.0/0.20

†Can handle a dynamic moment 3 times higher than the static moment capacity. Moment tests show failure point at 12 times static moment specifications.

Options

Option	# Pins	Electrical Rating	Description	Comments
MT8	8	20A/500V	MS cylindrical, threaded connector	Sealed, no-touch master pins
S19/S26	19/26	5A/250V	MS miniature quick-disconnect connector	Fluid resistant, untouchable master pins
R19/R26	19/26	5A/250V	MS miniature quick-disconnect connector	Fluid resistant, untouchable master pins
J16	16	5A/250V	MS miniature quick-disconnect connector	Serrated rhodium-plated contact pins
T19	19	5A/250V	MS cylindrical, threaded connector	Fluid resistant, untouchable master pins
F02/F04	—	—	(2) or (4) 3/8 G/NPT self-sealing ports	For fluid or pneumatic pass-through
P18	—	—	Additional (4) 1/8 NPT pneumatic ports	Provides a total of 12 pneumatic ports
P14	—	—	Additional (2) 1/4 NPT pneumatic ports	Provides a total of 10 pneumatic ports
V34	—	—	3/4 G vacuum port	Vacuum only
SIP	—	—	Lock/unlock sensing	See page 19



Bottom View Tool Plate

Side View

Top View Master Plate Without Cover Plate

Interface Advice:
 The tool interface plate should be designed to use M8 screws,
 Ø8 dowel pin and Ø50 recess.

Interface Advice:
 The robot interface plate should be designed to use M5 screws,
 Ø6 dowel pin and Ø80 boss. Reference Note 3.

Warning:
 Do not apply lock air pressure without master interface plate
 properly attached; otherwise, damage may occur to cover plate and o-ring.

ALL DIMENSIONS ARE IN MM

- Notes:
1. Optional electrical module shown; consult catalog for other options.
 2. Mounting hardware is provided; cover plate, o-ring and master plate screws.
 3. Cover plate is not necessary if robot interface plate provides sealing.
 The recommended interface plate bore depth without a cover plate is 2.5mm,
 with a cover plate is 5.6mm.
 4. Orientation marks are provided to assist in robot teaching.
 5. Misalignments allowed when coupling; consult specifications.
 6. DXF, DWG and IGES images available upon request.