

MODEL TC-5

Payload Capacity—kg/lbs. 8/18
 Static Moment X & Y Resistance†—Nm/lb-in 12.5/110
 Static Moment Z Resistance†—Nm/lb-in 17/150
 Positional Repeatability X, Y & Z—mm/in 0.010/0.0004
 Weight when Coupled—kg/lb 0.36/0.8
 Locking Force @ 80 psi (5.5 bar)—N/lb 690/155

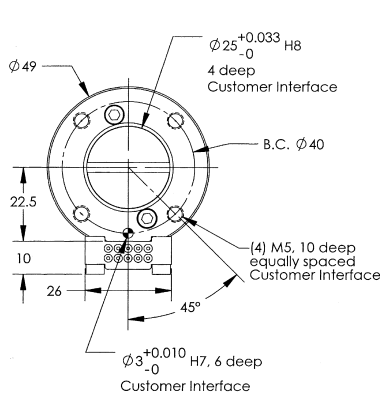
Diameter when Coupled—mm/in 49/1.9
 Height when Coupled—mm/in 48.5/1.9
 Pneumatic Port Type—Pass Through (6) M5 or #10-32
 Pneumatic Port—“Lock” & “Unlock” M5
 Min./Max. Allowable Distance Between
 Plates before Locking—mm/in 1.5-3.0/0.06-0.12

†Can handle a dynamic moment 3 times higher than the static moment capacity. Moment tests show failure point at 12 times static moment specifications.

Special Feature: Master forces separation of tool to prevent sticking while unlocking—a common problem when working with light payloads.

Options

Option	# Pins	Electrical Rating	Description	Comments
E10	10	3A/150V	Solder connection, miniature size	Gold-plated contact pins
E20	20	3A/150V	Solder connection, miniature size	Gold-plated contact pins
E30	30	3A/150V	Solder connection, miniature size	Gold-plated contact pins
B15	15	3A/50V	High density D-sub connector	Gold-plated contact pins
SIP	N/A	N/A	Lock/unlock sensing	See page 19

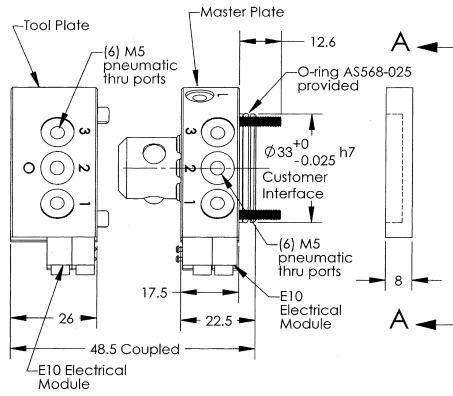


Bottom View Tool Plate

Interface Advice:
 The tool interface plate should be designed to use M5 screws $\phi 3$ dowel pin and the $\phi 25$ recess.

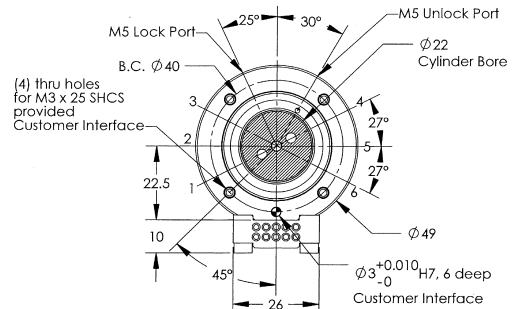
Warning:
 Do not apply unlock air pressure without master interface plate properly attached; otherwise, damage may occur to cover plate and o-ring.

- Notes:
- When coupling, maintain a gap between 1.5mm and 3mm.
 - Mounting hardware is provided; cover plate, o-ring and master plate screws.
 - Cover plate is not necessary if robot interface plate provides sealing. When the cover plate is utilized, (2) $\phi 3$ dowel pins are required.
 - Orientation marks are provided to assist in robot teaching.



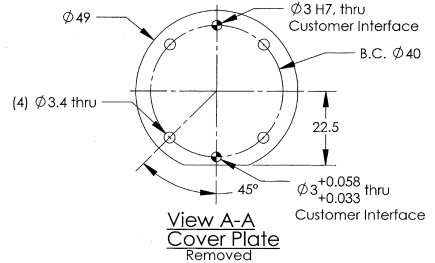
Side View

ALL DIMENSIONS ARE IN MM



Top View Master Plate Without Cover Plate

Interface Advice:
 The robot interface plate should be designed to use M3 screws, $\phi 3$ dowel pin and the $\phi 33$ boss. Reference Note 4.



View A-A Cover Plate Removed