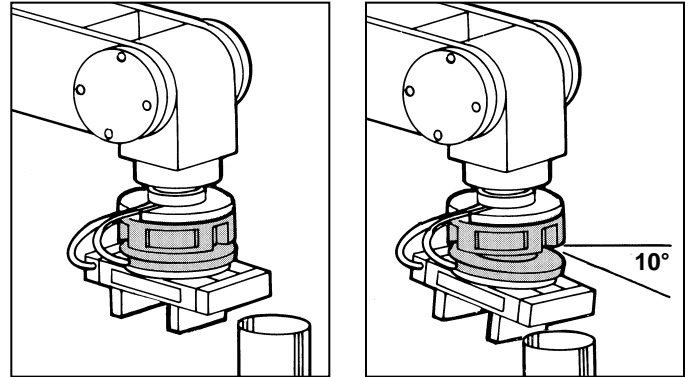


- **Quality Materials.** Constructed of tough, nylon-graphite composite with an aluminum mounting flange. Reinforced at critical points to prevent fatigue or sag.
- **Mechanical piston** resists breakage which is common among air diaphragm styles of pneumatic safety joints.
- **Built-in Robot Protection.** Allows up to 10° deflection (depending on model) for continued motion, without damage, after the robot has been shut off.
- **Simple switching mechanism** eliminates the need for tedious adjustment of proximity and mechanical switches common among other safety joints.
- **Easy Installation.** Connect the two wires to your 24 volt system. Only one air line is required for pneumatic control.

- **Versa-Matic safety joints** are completely field repairable for minimum downtime.
- **Repeatability.** Returns to within 0.002" of the original position after deflection (measured at mounting flange).
- **Versa-Matic safety joints** offer a range of tripping forces from 2 to 7491 inch-pounds within five wide-ranging series. This means one device may suit many applications in your facility.



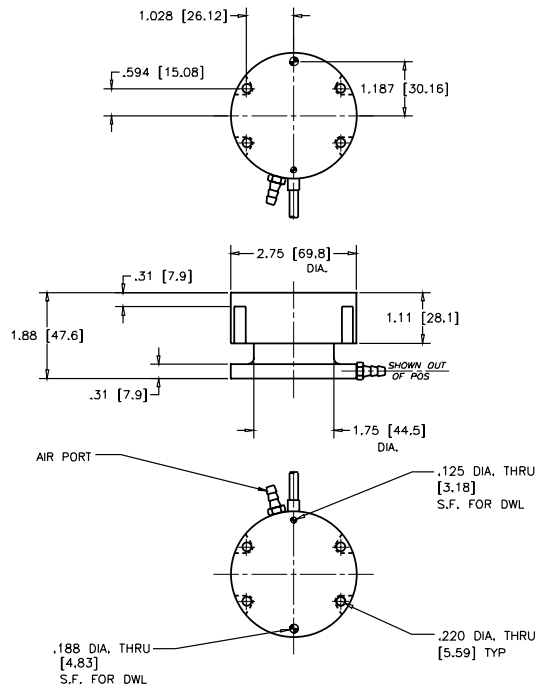
MODEL 4318

Specifications

Weight of Versa-Matic 9 oz.
 Operating Range –
 @ 90 psi (max) 2-107 in-lb.
 Maximum Deflection 10°

Spring Assisted Lower Limits

Model	In-Lb
Z.	Fully Pneumatic
A.	5
B.	8
C.	9
D.	13
E.	15
F.	19
G.	26
H.	32
I.	37
J.	47
K.	51
L.	55



To Determine Air Pressure Requirements:

IN-LB Requirements – Preset Lower Limit (if Applicable) ÷ 1.18 (4318 Constant) = PSI

Example: 80 in-lb – 19 ÷ 1.18 = 51 psi