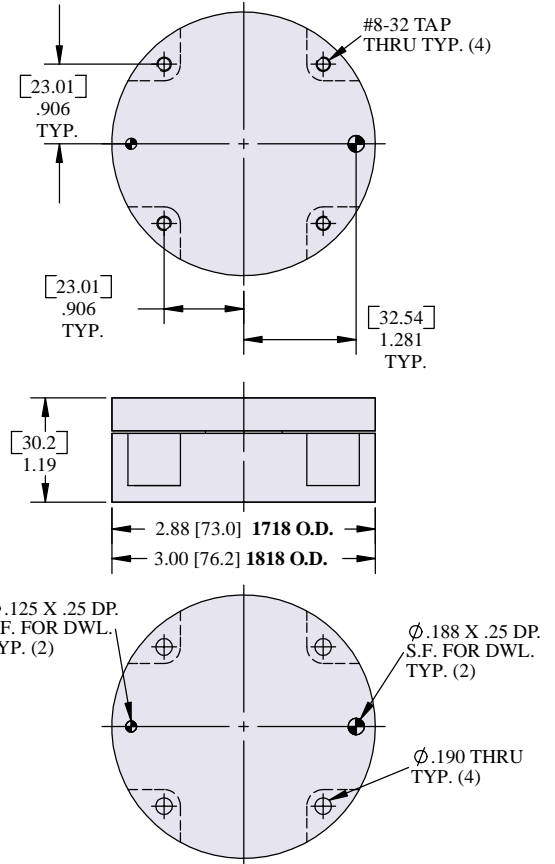


# MODELS 1718 Spring-Loaded 1818 Pneumatic

## Specifications

Unit Weight ..... 1 lb.  
 Maximum Lateral Misalignment .....  $\pm 0.10$  in.  
 Maximum Rotary Misalignment.....  $\pm 5^\circ$

Model #	Unit Horizontal		Unit Vertical	
	Max Payload lb	Torsional Resistance in-lb	Max Payload lb	Torsional Resistance in-lb
<b>1718 B</b>	14.5	13.0	4.8	3.1
<b>1718 C</b>	23.4	21.0	7.8	5.1
<b>1818 S</b>	55.8 @90 psi	35.3 @90 psi	18.6 @60 psi	11.8 @60 psi



## To find Total Payload:

SL = Static Payload = Mass of all tooling & parts  
 DL = Dynamic Payload = Max. Accel/Decel (G's) x SL  
 TL = Total Payload = SL + DL

